

Multipurpose spill berm Unique



INSTRUCTIONS FOR USE

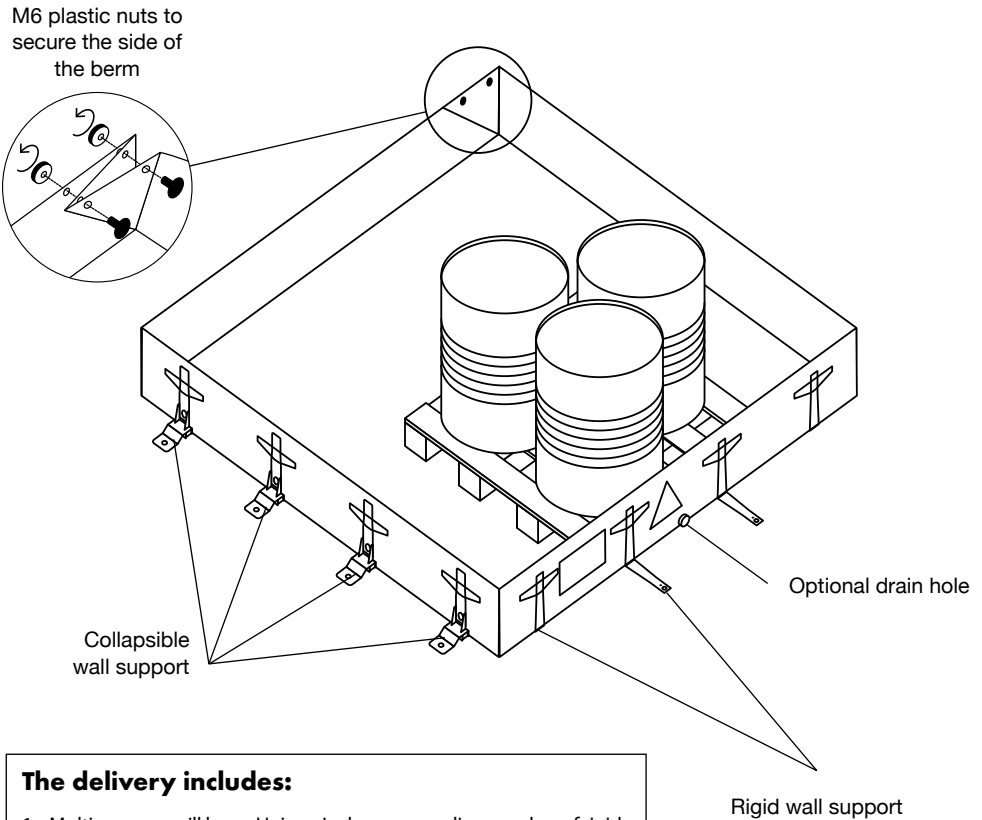
US



This document describes the operation and characteristics of the Multipurpose spill berm Unique (hereinafter “berm”). It contains important information about how to use the berms properly and how to increase their reliability and life. This document must always be available in the place where the berms are used. Keep it together with the berms at all times. The operator is responsible for using the berms safely and in compliance with the instructions in this manual, which applies to any third persons as well. If you have any doubts about the correct use of the berms, please contact the manufacturer or an authorized dealer.

The multipurpose spill berm Unique is specially designed to catch escaping hazardous substances in industrial halls. It is portable, light, compact, has a formable construction and is easy to assemble in just 2 steps. The berm can be made from a wide range of types of materials – it is therefore suitable for any environment. It can be placed under tanks with chemicals, containers, pipes, barrels, etc. At the same time, it can also be used as a collection tank in case of decontamination of machines and vehicles.

The multipurpose spill berm Unique

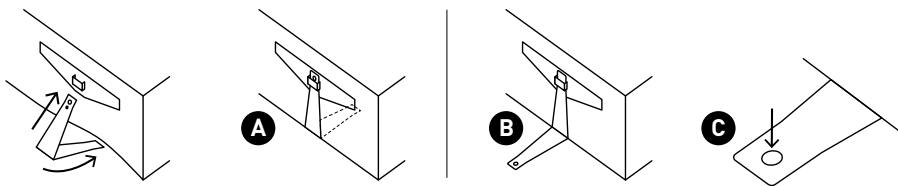


Technical specification of the berm

The berm is made from a durable industrial textiles with a special surface finish of different degrees of fire and mechanical resistance, to be applicable in the widest possible range of areas.

The outer wall supports are made from durable stainless steel (or galvanized steel). They consist of a removable stabilizing part (rigid and/or collapsible variant) and a part which is an integral part of the upper edge of the berm. The fitting is equipped with a simple Quick-Lock, into which the support is easily anchored. Thanks to this principle, the berm is quickly assembled in only two steps – unfolding the tarp and fixing the wall supports.

The rigid wall supports are preferably mounted below the bottom of the berm **A**. The advantage is that, if desired, the design of the brackets' locks allows the bracket to be mounted away from the berm **B**, for example, if a pallet or other object is placed close to the inner edge of the berm.



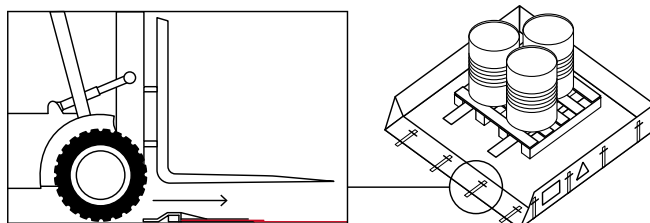
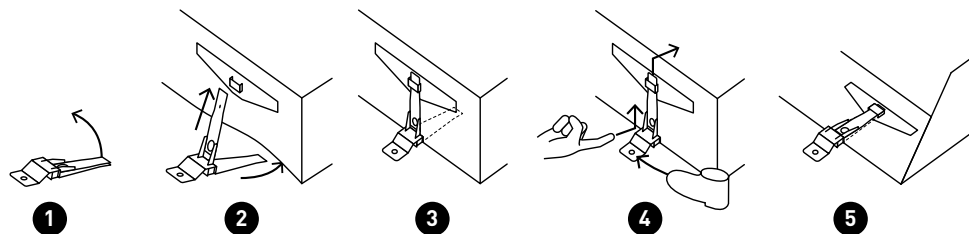
Attention! If several wall supports are installed one behind the other from the berm, it is necessary to ensure the stability of the berm by loading or otherwise anchoring it to the floor **C**.

Attention! Driving across the side of the berm

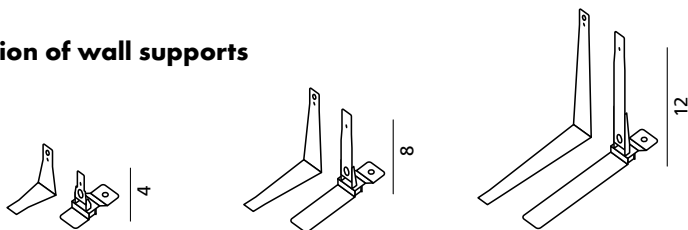
- Quick-Lock locks allow easy removal of the support – so the side of the berm can be easily crossed.
- Assembly of the folding version of the wall support is quick and allows the side of the berm to be folded down (figures 4 and 5) without the need to dismantle the support.

If possible, avoid crossing over the supports/fittings directly – you protect them from damage.

Warning – collapsible supports fittings are designed for driving over rubber wheels. Never drive them over the hard (plastic, metal) wheels of the handling equipment.



Technical specification of wall supports



Type	Height of the support (in)		
Rigid wall support	4	8	12
Collapsible wall support	4	8	12

All side supports can be ordered from one of three materials: **AISI 304 (stainless steel)**
AISI 316 (stainless steel)
DX51 + Z (galvanized steel)

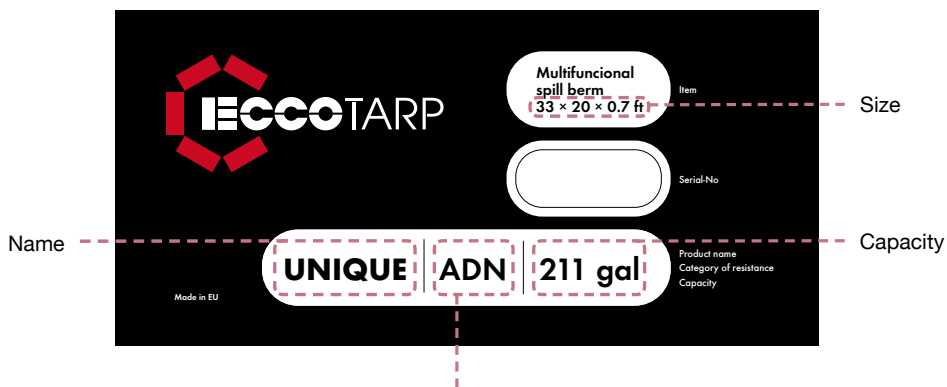
If necessary, the berm can be fitted with a drain hole and a ball valve.

A bag for the berm is not a standard part of the product. It can be provided on request.

Material specification and mechanical resistance

The berm can be made according to customer's requirements. He can specify not only the size, but after professional consultation with the sales department, also the material from which the berm is to be made, so that it can be used in a specific environment (industrial production halls, industrial warehouses, etc.).

Due to the wide range of product types, each berm has a label providing its definite specifications.



Fire, mechanical and special resistance of the material

General information



When using the berms, observe these instructions as well as all the safety notices herein.

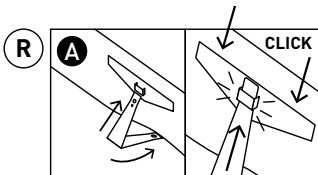
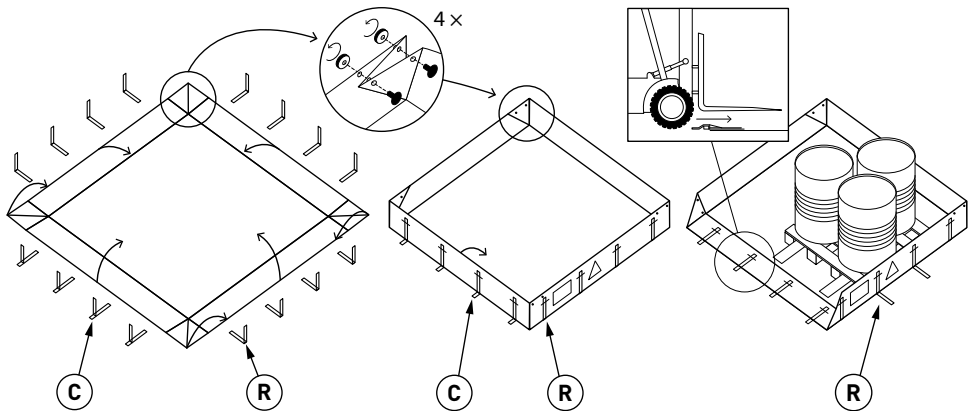
1. The berms are designed as a fast solution for emergency situations. They are intended for catching hazardous substances leaking into the environment.
2. They are produced in different dimensions and versions.
3. Their structure can be shaped and adapted to uneven surface and other obstacles.
4. The stability of the berm is ensured by side supports anchored with a Quick-Lock system.
5. The berms can be made of various types of materials to fully meet the requirements and demands of the specific environment in which they will be used – eg. self-extinguishing, antistatic, etc.
6. The berms are not intended for long-term storage of aggressive substances.
7. A bag for the berm is not a standard part of the product. It can be provided on request.
8. The berm can be fitted with a drain hole and a ball valve on request.

Instructions for putting the berm into the ready-to-use position

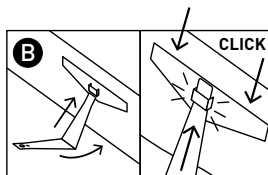


Spread the berm on a flat surface. Prepare the required number of wall supports for each side of the berm. Anchor the wall supports by fitting into the Quick-Lock on the top edge of the berm.

Illustrated instructions for unfolding Multipurpose spill berm Unique



Rigid wall support



Collapsible wall support

Handling instructions and safety warnings

1. Put the berm onto a flat surface, if possible.
 2. Make sure there are no sharp objects under the berm, such as pieces of broken glass, nails, sharp stones, etc., which might mechanically damage its bottom.
 3. Do not put the product near fire or any other sources of heat.
 4. The berms are resistant to a large number of different liquids and loose materials.
 5. The berms are not intended for long-term storage of aggressive substances.
 6. **Warning** – the warranty does not cover damage from long-term exposure to chemicals. This can also occur after the product is improperly cleaned after intervention. Even a small amount of aggressive chemicals will cause degradation of the material from which it is made during long-term exposure. This can be manifested by microscopic cracks on the surface, or by a change in the properties of the material, which can lead to easy damage and tearing.
 7. Do not move or pull an empty or a filled berm on the ground – the manufacturer's warranty does not cover mechanical damage.
 8. After each use it is necessary to wash the berm thoroughly, clean it with suitable detergents and let it dry completely – see maintenance and storage (p. 7).
 9. Observe the safety measures for working with hazardous liquids and with substances harmful to the environment.
 10. Make sure you observe any necessary precautions regarding personal safety, such as the use of protective equipment.
 11. **Attention!** Crossing the side of the berm – Quick-Lock allows easy removal of the side support – so the side of the berm can be easily crossed. The assembly of the folding version of the side support is quick and allows a controlled folding of the side of the berm (p. 3) without the need to dismantle the support. If possible, avoid crossing the support/fittings directly – you protect them from damage.
 12. **Warning** – collapsible supports fittings are designed for driving over rubber wheels. Never drive them over the hard (plastic, metal) wheels of the handling equipment.
-

Recommended optional accessories

The following optional accessories for Multipurpose spill berm Unique are provided for a surcharge:

- bag for the berm
- drain hole – type depends on the size of the berm
- ball valve – type depends on the size of the berm
- protective pad under the berm

Both types of side supports can also be purchased as optional extras, eg. in case of loss or destruction of the supports, which were supplied as a standard part of the berm.

Maintenance and storage

After the draining and prescribed environment-friendly disposal of the collected substance, the product must be washed with proper neutralization detergent (in the case of aggressive substances) and lukewarm water or another suitable detergent. The construction of the berm allows it to be completely spread out without any folds. When cleaning the berm, including the corners, disassemble it completely – see the picture. We recommend storing the berms folded in the carrying bag so that they are not damaged while not in use. The berm must be dried thoroughly before it is put into the bag. For long-term storage, place the berm in a dry place out of the reach of UV radiation.

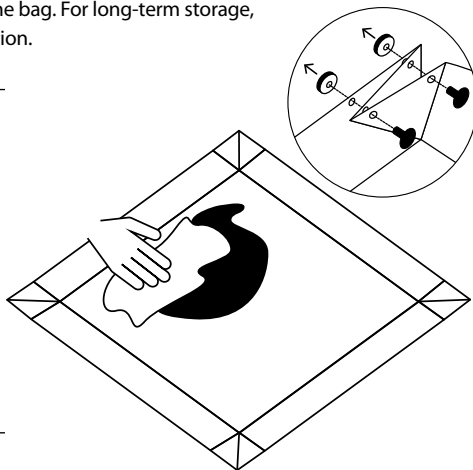
Important contact information

Qualified service:

ECCOTARP USA, inc.
357 West 36th Street
New York, NY 10018
USA

office@eccotarp.com

T: 1 212-725-9845



Repair

Any repair work on the collapsible berms must always be done by the manufacturer's qualified personnel. In the event of unprofessional repair or design change, the product's proper operation cannot be guaranteed. If you want to request repair, order accessories or lodge a complaint, please, contact your qualified supplier.

Warranty conditions

The warranty period is indicated in the warranty certificate on the last page of these Instructions for use. The warranty period is 24 months and begins on the day indicated in the warranty certificate. The warranty does not apply to the normal wear and tear or to damage caused by improper use or by the instructions in this manual not being observed.

Warning – the warranty does not cover damage from long-term exposure to chemicals. This can also occur after the product is improperly cleaned after intervention. Even a small amount of aggressive chemicals will cause degradation of the material from which it is made during long-term exposure. This can be manifested by microscopic cracks on the surface, or by a change in the properties of the material, which can lead to easy damage and tearing.

Disposal

The product must be disposed of in compliance with applicable legal regulations and with the user's internal directives.

Warranty Certificate



This product is guaranteed for 24 months.

This warranty covers:

for defects caused by a manufacturing defect in the material used – and any other damage not caused by demonstrable mishandling by the user or any modification of the product.

This warranty does not cover:

for damage caused by improper handling of the product and non-compliance with the “Instructions for Use” – such as cuts or other mechanical damage to the seal, when placed in an unsuitable place with a sharp surface, abrasion or placement of the product near an open flame and the like.

Warning – the warranty does not cover damage from long-term exposure to chemicals. This can also occur after the product is improperly cleaned after intervention. Even a small amount of aggressive chemicals will cause degradation of the material from which it is made during long-term exposure. This can be manifested by microscopic cracks on the surface, or by a change in the properties of the material, which can lead to easy damage and tearing.

The manufacturer is not liable for direct or indirect damage caused by other than the recommended use of the product.

Complaints must be applied within 24 months of purchase from your supplier. When applying please provide your complaint with full details – product serial number, proof of purchase, where appropriate photographic documentation and a detailed description of the circumstances in which a fault has occurred.

.....
Product Name:

.....
Production Code:

.....
Date of sale:

.....
Failure description:

.....
Stamp and Signature:

.....
In case of problems, please contact: